



for the most up-to-date product and technical information!



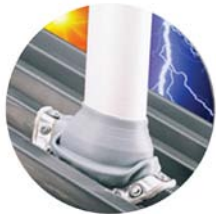
### Standard Applications

Pipe Size Outside Diameter	Flash Number	TFC Part Number	Number of Fasteners
1/4" to 2" EPDM	#1	001DEKR	10
1-3/4" to 3-1/4" EPDM	#2	002DEKR	13
1/4" to 4" EPDM	#3	003DEKR	16
	*silicone	003DEKS	16
3" to 6" EPDM	#4	004DEKR	19
4" to 7" EPDM	#5	005DEKR	22
	*silicone	005DEKS	22
5" to 9" EPDM	#6	006DEKR	26
6" to 11" EPDM	#7	007DEKR	30
8" to 13" EPDM	#8	008DEKR	35
	*silicone	008DEKS	35
10" to 18" *EPDM	#9	009DEKR	54
	*silicone	009DEKS	54

Note: Numbers 1 and 3 are closed top. When flashing a steep pitch roof greater than 20 degrees, or a profile with a rib height of 1-1/2" or more, use the next larger size flashing for increased flexibility.

### Material Specifications

	EPDM	Silicone
Advanced Ozone Resistance	70 hours @ 500pphm	70 hours @ 500 pphm
High Temperature Resistance		
Intermittent	+135° C (275° F)	+260° C (+500° F)
Continuous	+100° C (212° F)	+225° C (+437° F)
Low Temperature Resistance	-55° C (65° F)	-74° C (-100° F)
Tensile Strength (min)	10 MPa (1450 psi)	5 MOPa (700 psi)
Compression Set (max)	25%	50%



- Flexible, weather resistant EPDM rubber or silicone
- Appropriate pipe size diameter listed on flashing to assure proper fit
- Aluminum base is flexible to conform to any panel profile
- Grey EPDM is ozone and ultraviolet resistant

### Fastening Recommendation

Corrosion resistant fasteners should be used around the base one every 1-1/2 inches as per the United Plumbing Code (UPC) recommendations. Refer to size chart for the quantity to use.



#### Fastener

1/4-14 x 1-1/8" DP1 BLAZER Stainless Cap Head with VRT Technology



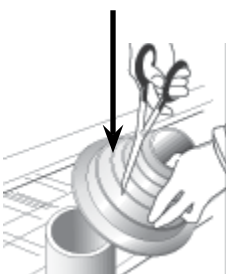
### Sealant Recommendation

Polyurethane sealant should be used under the base to assure a proper seal. If you prefer, additional sealant can be applied around base after installation.

## Five easy steps for assuring a leak free roof penetration

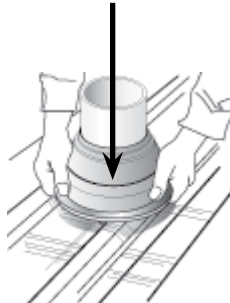
#### Step 1

Cut on the proper pipe diameter marked on the flashing



#### Step 2

Position over pipe and slide down the pipe



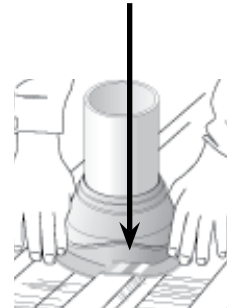
#### Step 3

Apply polyurethane sealant to the bottom of the base



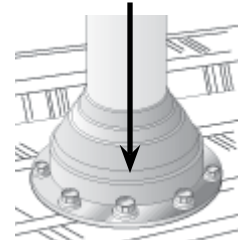
#### Step 4

Mold the flexible base to the panel contours



#### Step 5

Fasten with 1/4" x 1-1/8" self drilling fastener every 1-1/2" around the base





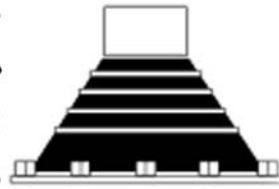
**PIPE-MASTER™ RETRO**  
Use in retrofit applications

- ◆ EPDM
- ◆ Easy to install

**Retrofit Applications**

Pipe Size Outside Diameter	TFC Part Number	Number of Fasteners
3/4" to 2-3/4"	801RETDEK	13
2" to 7-1/4"	802RETDEK	23
3-1/4" to 10"	803RETDEK	30

**PIPE MASTER**  
PIPE FLASHING



**Available in nine colors to match your roof!**

**Sizes**

- #3 - Pipe diameter 1/4" to 4"
- #5 - Pipe diameter 4" to 7"

Material: EPDM



**Flash square tubing or angle iron**



Square Tubing



Angle Iron

**P: Plastic Snap Rivets • S: Stainless Cable & Aluminum Rivets**

Adapters	Size	1/2 x 1/2	3/4 x 3/4	1 x 1	2 x 2	3 x 3	4 x 4			
Square	Part No.	D050	D075	D101	D102	D103	D104			
Angle Irons	SIZE	1-1/2 x 1-1/2 x 1/4	1-3/8 x 1-3/8 x 3/16	1-3/4 x 1-3/4 x 1/8	2-1/2 x 2-1/2 x 1/4	3 x 3 x 1/4	3x 3x 5/16	3x 3x 3/8	1 1/2 x 1 1/2 x 1/4	4 x 4 x 1/2
	Part No.	D215	D213	D217	D225	D206	D230	D231	D232	D240